

## Hydro LA440-P

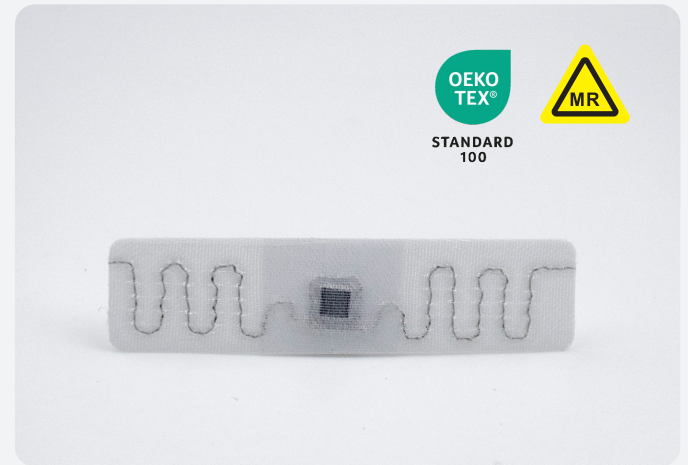
50 x 12 mm M830

With the RFID, one of most widely used automatic identification (Auto-ID) technology, RICHRFID laundry tags are with unique ID in the new generation RFID chip and support high-speed bulk reading, ultimate solution for seamless textile management. No more missing inventory, mix-ups, or time-consuming manual counts—simply scan and know exactly where each item is at all times. Durable, discreet, and easy to integrate into your workflow, the RFID Laundry Tag streamlines operations and gives the total control of textiles.

Designed for high-volume textile services in hotels, hospitals, industrial workwear, and linen rental operations, they provide real-time visibility and full lifecycle traceability of textiles from distribution to return, helping reduce losses, improve inventory accuracy, raise efficiency, optimize process and cut costs.

Engineered for textile identification and tracking in industrial and commercial laundry environments, RICHRFID laundry tags, with solid chip encapsulation and firm antenna, are built to survive harsh conditions, high temperatures (drying/iron), aggressive chemicals, detergents, high-pressure washing, drying, and hundreds of cycles, typically 200, while remaining discreet, comfortable (no sharp edges), and fully functional and provide real-time visibility and full lifecycle traceability of textiles from distribution to return, helping reduce losses, improve inventory accuracy, and streamline operations.

Multiple installation methods are available, such as sewing, heat sealing, pouch, also soft and lightweight for textile integration. Due to the special antenna material, they are compatible for needle detector and MRI (Magnetic Resonance Imaging) machine.



### Applications

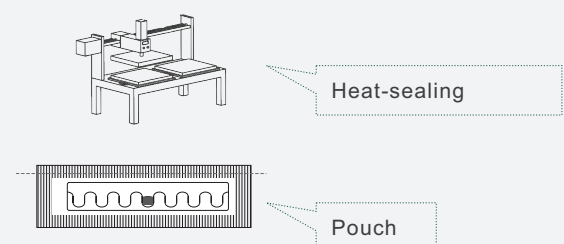
- ✓ Hospitality: Hotel linens, towels, robes, uniforms. Prevents loss, optimizes inventory, automates sorting.
- ✓ Healthcare: Hospital linen, patient gowns, surgical textiles. Tracks sterilization cycles, ensures compliance.
- ✓ Industrial / Corporate: Workwear, rental uniforms, cleanroom garments. Manages stock, usage cycles, and maintenance.
- ✓ Sports / Leisure Clubs: Towel rental, locker management.
- ✓ Laundry Service Providers: Automated sorting, billing, loss prevention.



### Highlight & Benefits

- Long, efficient and reliable bulk reading for fast inventory and sorting.
- Withstands industrial washing, drying, and ironing processes.
- High resistance to water, detergents, chemicals, pressure, etc.
- Flexible attachment options.
- Customization—design, printing, encoding available.
- Compatibility with MRI & needle detector.

### Installation



## Technical Features

Model	Hydro LA440-P
<b>RFID Features</b>	
Air Interface Protocol	EPC Class 1 Gen 2, ISO / IEC 18000-63 Type C
Frequency	860-960 MHz
Chip Type	Impinj Monza 830
Memory	User - N/A; EPC - 128 bits; TID - 96 bits
Data Storage	> 20 years
Re-write	100,000 times
Read Range (2W ERP)	FCC: > 7.0 m (23.0 ft) ETSI: > 6.5 m (21.3 ft)
<b>Physical Features</b>	
Dimension	50 x 12 mm (1.97 x 0.47 in)
Thickness	1.48 mm (0.06 in) on chip location only, Rest of tag is 0.62 mm (0.03 in)
Weight	0.32 g
Material	Polyester
Installation	Heat-seal the tag onto the textile at 210°C and 0.6-0.8 MPa for 20 seconds or pouch
<b>Durability Features</b>	
Lifespan	200 washing cycles or 3 years, whichever comes first
Washing Method	Laundry, Dry cleaning
Water Extraction Pressure	60 bars
Chemical Resistance	Detergent, Softener, Bleach (Oxygen / Chlorine), Alkali
Washing Temperature	90°C (194°F) / 15 minutes
Pre-drying in Tumble	180°C (356°F) / 30 minutes
Ironing Temperature	185°C (365°F) / 10 seconds
Sterilization Temperature	135°C (275°F) / 20 minutes
<b>Other Features</b>	
Humidity / Temperature-Operating	-20~+85°C (-4~+185°F) / 8~95%RH
Customization	Printing, Encoding, Design, etc.
Package	1000 pcs / bag, 30 bag / box

**RICHRFID**

Web: <https://www.richrfid.com> E-mail: [info@richrfid.com](mailto:info@richrfid.com)  
Shenzhen | Hong Kong | Singapore | Seoul | Tokyo | Paris



### DISCLAIMER

All specifications are indicative and results may vary. Each user bears full responsibility for making its own determination as to the suitability of RICHRFID products, materials, services, recommendations, or advice for its own particular use.

For intended use only. Not to be repurposed or used for other applications without prior written permission from the manufacturer.

@2026 RICHRFID. All rights reserved.