

UHF PET Jewelry Label

This Jewelry adhesive label is compliant with EPC C1G2 (ISO18000-6C) standard, operating frequency is 860 ~ 960MHz (It can be used worldwide). Each tag has a unique ID and stores user data. The Jewelry adhesive label is designed for use in jewelry and small items applications where the tag may be in close proximity to small metal or metallic coated objects. It can be used for brand anti-counterfeiting, inventory counting, anti-theft tracking, etc.

Physical Features:

Model:	RC9017-7
Material:	PET
Dimensions:	68 x 13 mm
Working Temp:	-40~+85°C
Storage Temp:	23 ± 3°C
Storage Humidity:	50 ± 15%RH
IP Code:	IP68

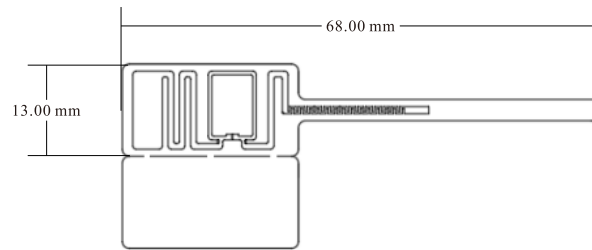
RFID Features:

RFID Standard:	ISO/IEC 18000-6C (EPC Gen2)
Chip Type:	Qstar-71GB/73GB
Memory:	71GB: User - 128 bits; EPC - 496 bits; TID - 48 bits 73GB: User - 512 bits; EPC - 128 bits; TID - 48 bits
Read Range(Fixed Reader):	ETSI: 6.5m, on jewelry; FCC: 7.7m, on jewelry
Read Range(Handheld Reader):	ETSI: 3.5m, on jewelry; FCC: 4.0m, on jewelry

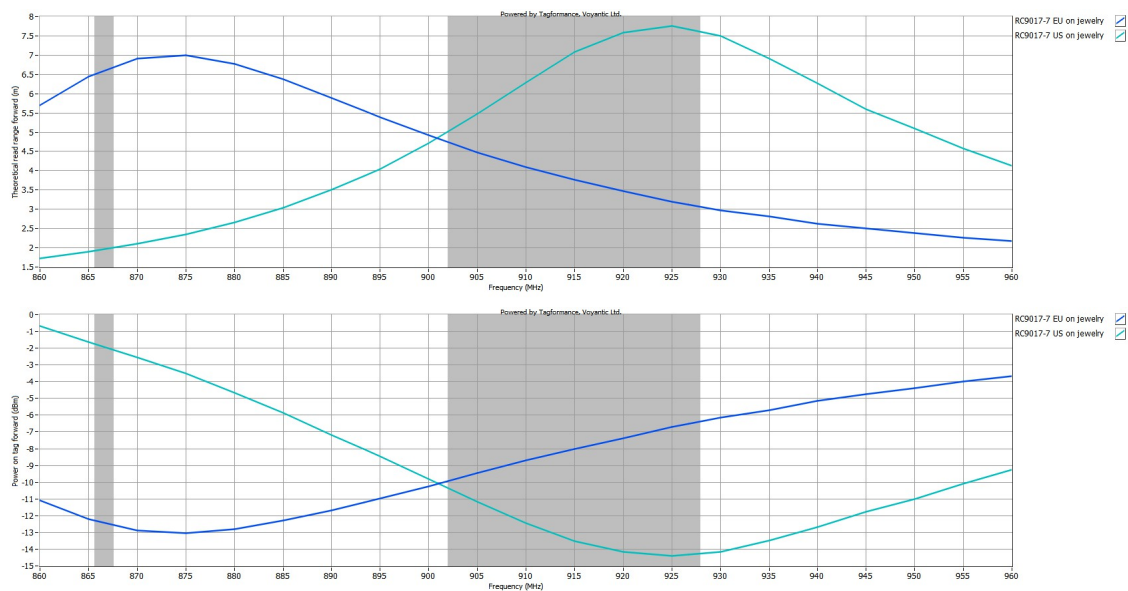
Other Features:

Data Storage:	> 20 years
Re-write:	100,000 times
Installation:	Hang
Customization:	Logo, barcode/QR code, number printing, encoding, design, etc.
Package:	Reel core inner dimension: 76.2mm/ 3", 2500pcs/roll.
Application:	<ul style="list-style-type: none"> Jewelry Security management Glasses Control Tracking Bag Tracking management, etc.

Dimensions:



Read Range(on metal jewelry):



Application:

