

Mesh DF 54 x 34 mm EM4425

The Mesh DF label from RICHRFID is a versatile, high-performance tag designed for a wide range of applications. It delivers reliable reading performance across supply chain management, inventory control, logistics, retail and apparel.

The product is complied with EPC global Class 1 Gen 2, ISO 9001 quality management and ISO 14001 environmental management standards, ensuring reliable, industry-grade performance for diverse use cases.

Equipped with the EM4425 IC, The chip combines all functionalities on a single die, with NFC for proximity range, HF for vicinity range, and RAIN technology used for long range application purposes. All protocols make use of a shared memory and a common IC serial number. The chip is a dual frequency device supporting ISO/IEC15693, ISO/IEC 18000-3 Mode 1, NFC Forum Type 5 Tag, ISO/IEC18000-63, EPCTM Gen2v2, and ISO/IEC 29167-10.

By enabling Privacy Mode, the label can be used for high-value products, authenticity verification, and applications requiring enhanced privacy protection.

The label size 54 x 34 mm and performance make it especially well-suited for retail application.

Overview

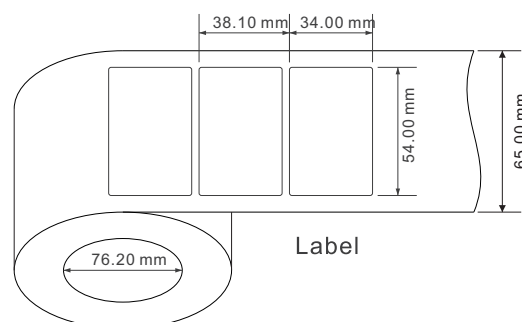
Frequency Band
UHF 860-960 MHz
HF 13.56 MHz

Chip Type
EM4425

Dimensions
54 x 34 mm / 2.13 x 1.34 in

Air Interface Protocol
ISO/IEC 18000-63 Type C
ISO/IEC 15639 Type A
NFC FORUM Type 5

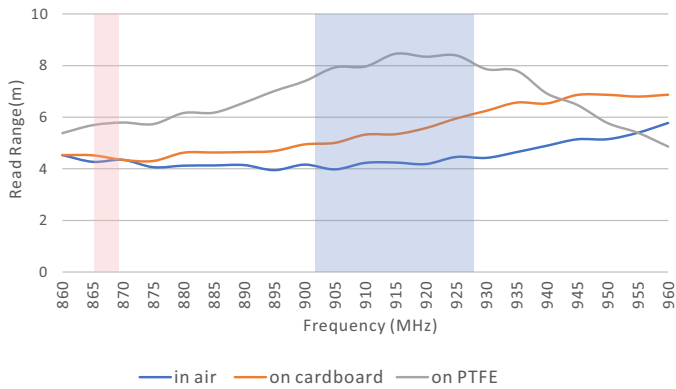
Application
Authentication & Brand protection
Digital product passport
Food & Pharmaceuticals
Supply Chain
Hospitality & Events



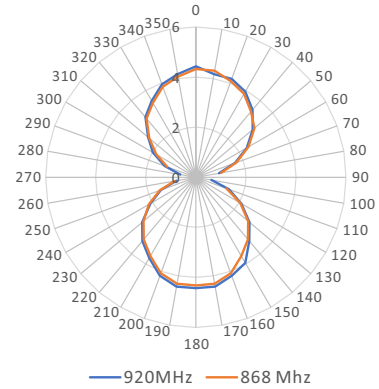
Technical Features

Model	RC5131
RFID Features	
Frequency	860-960 MHz
Application	Non metal
Chip Type	EM4425
Memory	UID-64 bits, TID- 96 bits 2048-bits used for HF +UHF User memory
Data Storage	> 10 years
Re-write	100,000 times
Physical Features	
Dimensions	54 x 34 mm / 2.13 x 1.34 in
Material	Coated Paper
Adhesive	Hot Melt
Operating Temperature	-40°C to 85°C / -40°F to 185°F
Storage Condition	20±5°C, 50±10% RH, Store away from sunlight
Other Features	
Installation	Adhesive on clean & dry surface
Customization	Printing, Encoding, Designing, etc.
Package	2,500 pcs / roll, 4 rolls / box

Read Range(2W ERP)



Radiation Pattern



PS: The performance is theoretical values in the lab and the actual effect depends on the specific applications.

RICHRFID

Web: <https://www.richrfid.com> E-mail: info@richrfid.com
Shenzhen | Hong Kong | Singapore | Seoul | Tokyo | Paris



DISCLAIMER

All specifications are indicative and results may vary. Each user bears full responsibility for making its own determination as to the suitability of RICHRFID products, materials, services, recommendations, or advice for its own particular use.

For intended use only. Not to be repurposed or used for other applications without prior written permission from the manufacturer.

@2026 RICHRFID. All rights reserved.